

UNOFFICIAL DOCUMENT

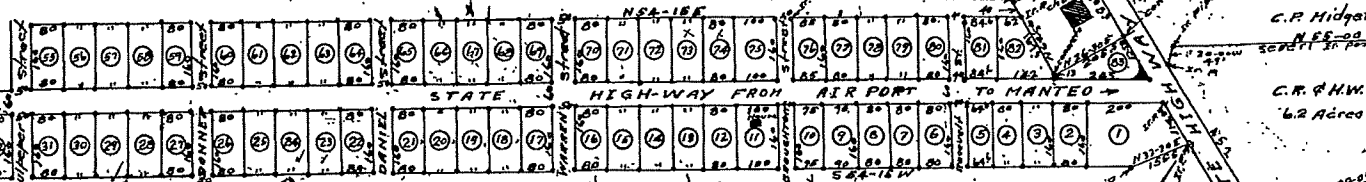
UNOFFICIAL DOCUMENT

Rommie Knight

S 54-16 W 2722.2 feet

2021.7 ft

BARBER TRACT



I, J.L. FOX, REG. SURVEYOR
 being duly sworn
 here on certificate that
 the Map here on attached
 was made by him from
 an actual survey by
 him made and that all
 information shown
 here on is true and
 accurate as far as
 he has any knowledge
 sworn to and signed
 before me this 18 day
 Nov. 1946
 G.R. Pearce

**MAP OF THE
 EVANSVILLE**

SUBDIVISION
 NEAR MANTO DARE COUNTY NC
 SURVEYED Nov. 1946 for

C.R. EVANS
 Scale 1 inch = 200 feet

J.L. FOX REG. Surveyor

Note: All corners have
 1" cap pipes from
 10" to 12" on south side
 of H.W. and from
 8" to 10" on north side
 of H.W. except where
 concrete is shown